

Appendix 5

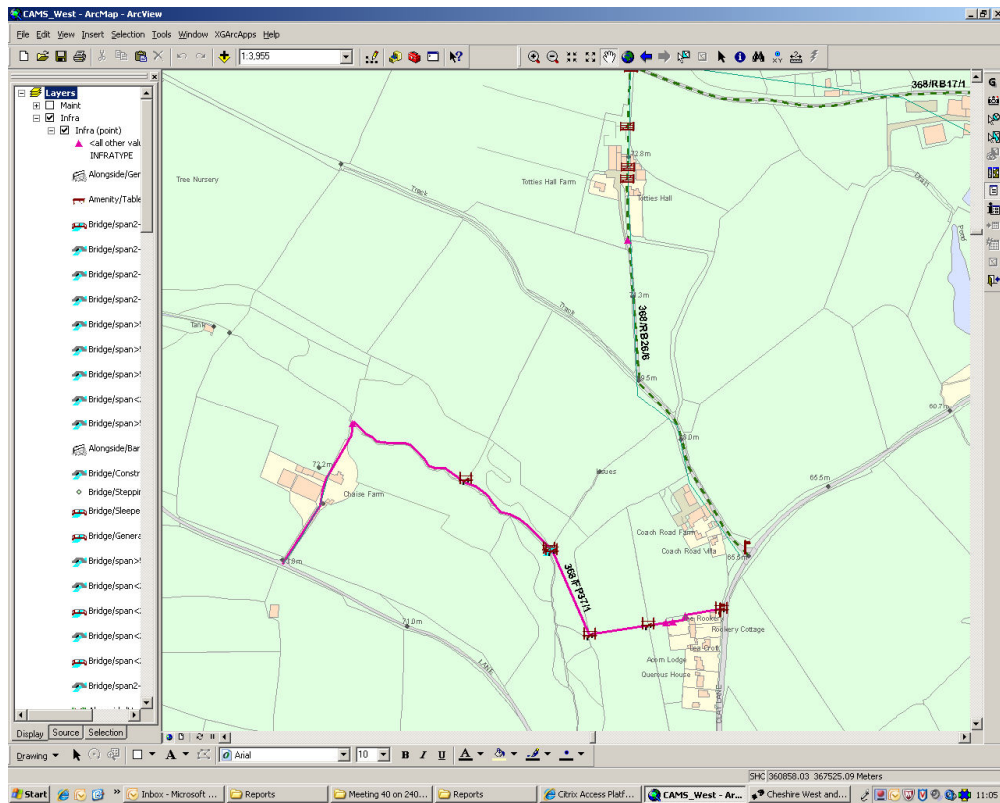


Figure 1

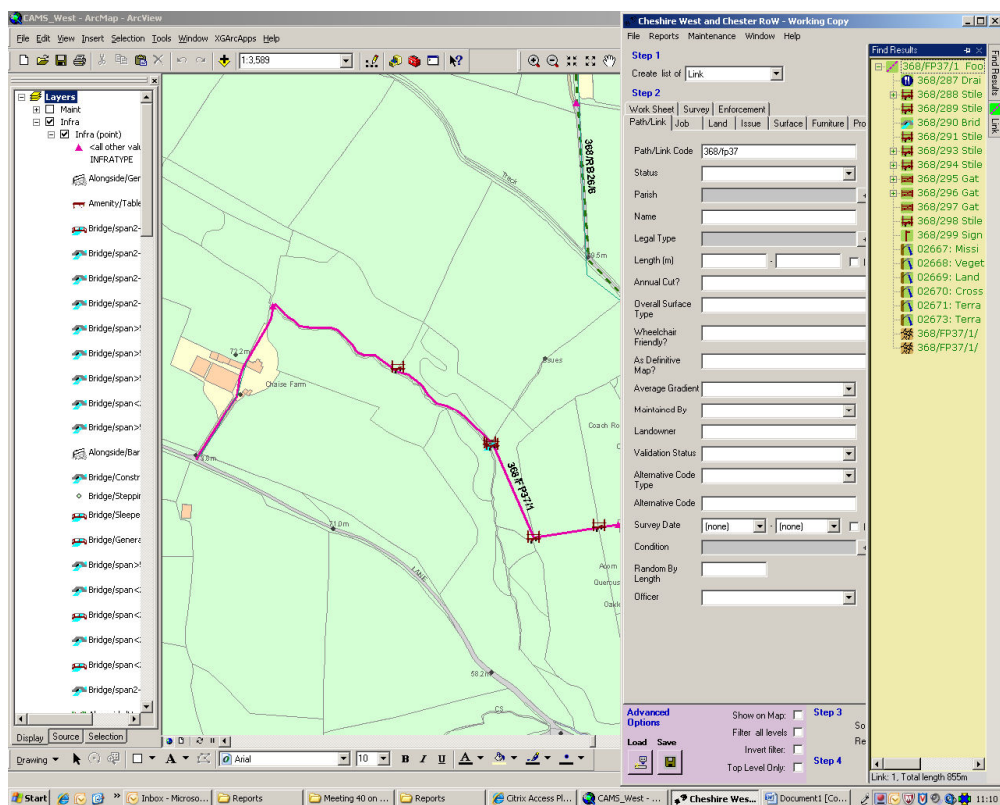


Figure 2

Fig1 snapshot of the mapping detailing Marton FP57

Fig2 CAMS can detail all furniture items and issues relating to this path

Figure 3

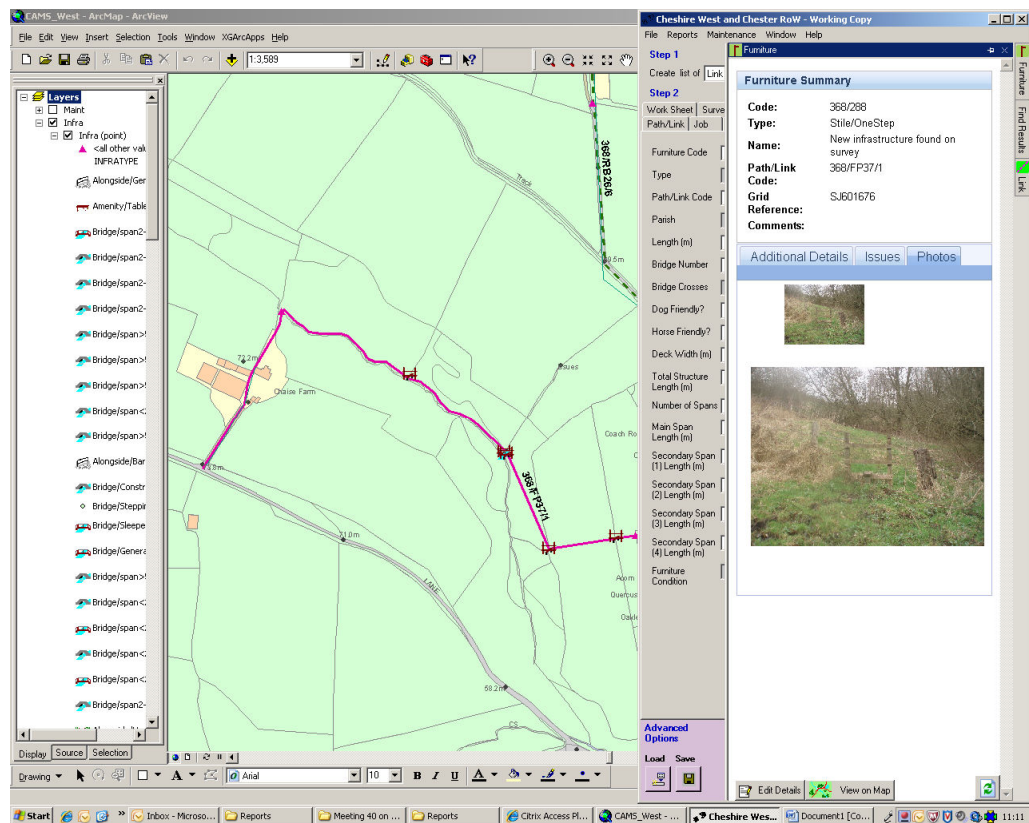


Figure 4

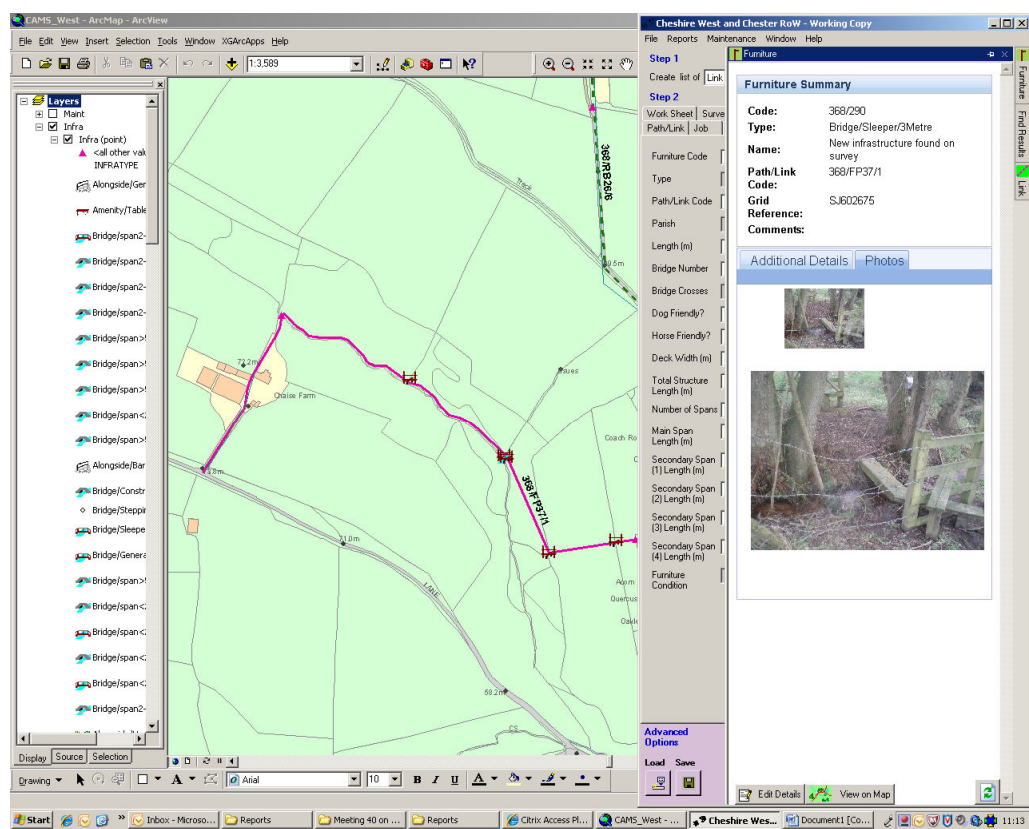


Figure 3 & 4 show the photos available for a few of the furniture items along the route

Figure5

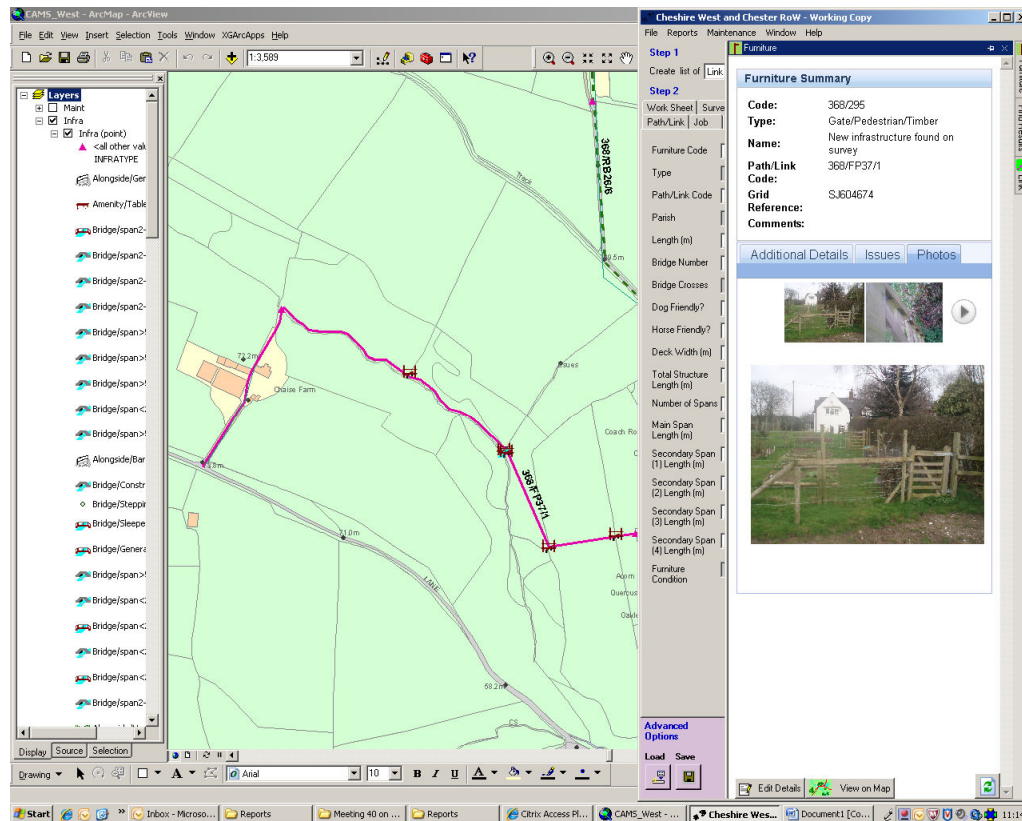


Figure 5 shows the gate at the junction of Clay Lane

At the moment a walker following either Ordnance Survey maps or having looked at the interactive mapping available may have decided to walk along Marton FP57 as a safe off road route, without realising there are several stiles to navigate on route.

With the survey information added to the online mapping a more informed judgment could be made to avoid disappointment and suggestions could be made for improvements

The information above is taken from our CAMS database and as such is just a representation of what information could be displayed. The final interactive mapping would be simple to use and would also allow you to build up layers of information such as train stations and bus stops, car parks and toilet facilities etc.

To view the current online mapping go to the PROW homepage below and follow the link 'view the rights of way network map online'

www.cheshirewestandchester.gov.uk/prow